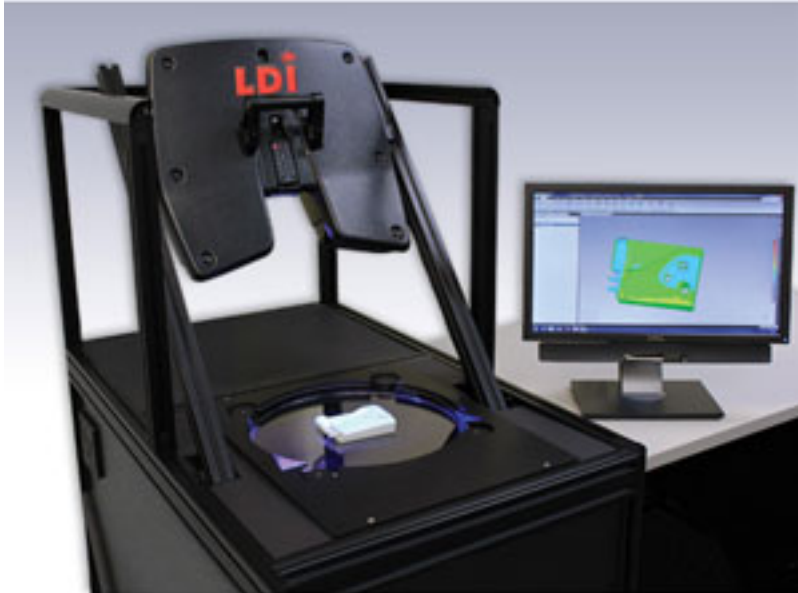


Inspection-Grade 3D Scanning System



Laser Design Inc. has announced the unveiling of its newest and most automated inspection-grade 3D scanning system, the SURVEYOR Auto Gage 3D. According to the company, the system offers:

- Complete high-speed part inspections in minutes with minimal operator training.
- First article part inspections, incoming part inspections and sample part inspections on the shop floor can now be performed by machine attendant-level employees.
- Structured light projection technology from one scanner head captures all viewable surfaces of small- to medium-sized objects.
- A work envelope of 6 inches by 6 inches by 4 inches (Auto Gage 4100) or 10 inches by 10 inches by 5 inches (Auto Gage 6100).
- A design that is versatile enough for inspection and reverse engineering applications, and speedy enough for factory-floor verification uses.
- Scans that are accurate to +/- 0.001 inches (0.025mm).
- A built-in system PC provides full control for scanning and optional data processing.
- Most parts do not require fixturing unless they are unstable in the desired orientation.
- Typically scanned objects include small- to medium-sized parts made of plastic, metal and rubber, and cast, molded, forged and machined parts.

Inspection-Grade 3D Scanning System

Published on Chem.Info (<http://www.chem.info>)

- Fully automated inspection reports can be created and reports comparing the scan data to CAD models can be immediately viewed by the operator to make a fast Go/No Go decision of shape verification.

www.laserdesign.com [1]

Source URL (retrieved on *01/28/2015 - 1:55am*):

http://www.chem.info/product-releases/2012/04/inspection-grade-3d-scanning-system?cmpid=related_content

Links:

[1] <http://www.laserdesign.com/>