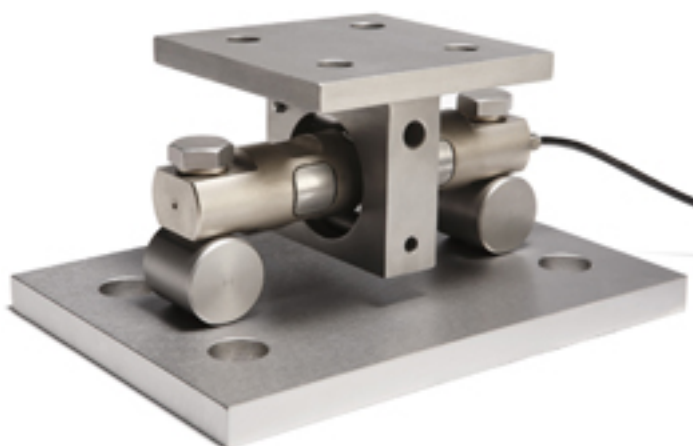


## Dual-Ended-Beam Weigh Module



METTLER TOLEDO's new SWD440 dual-ended-beam weigh module offers good value for general-purpose weighing of tanks, hoppers and OEM machinery. The module:

- Is available in painted carbon steel or glass bead blasted stainless steel mounting hardware.
- Uses carbon steel assemblies with a nickel-plated alloy steel model SLD431 load cell or while stainless steel assemblies with a stainless steel model SLD530/SLD531 load cell.
- Features a dual-ended-beam design with potted seals that provide IP67 protection.
- Are available in 5,000 lb through 250,000 lb capacities.

[shana.wheeler@mt.com](mailto:shana.wheeler@mt.com) [1]

[www.mt.com/us](http://www.mt.com/us) [2]

**Source URL (retrieved on 01/25/2015 - 11:43pm):**

[http://www.chem.info/product-releases/2010/08/dual-ended-beam-weigh-module?qt-recent\\_content=0&qt-most\\_popular=0](http://www.chem.info/product-releases/2010/08/dual-ended-beam-weigh-module?qt-recent_content=0&qt-most_popular=0)

### Links:

[1] <mailto:shana.wheeler@mt.com>

[2] <http://www.mt.com/us>

## Dual-Ended-Beam Weigh Module

Published on Chem.Info (<http://www.chem.info>)

---